

# ideapad 320

L I F E   J U S T   G O T   E A S I E R .

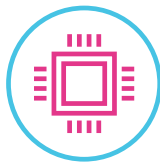
Everything about the Lenovo™ IdeaPad™ 320 is designed to simplify your life. It will handle any task with ease, thanks to powerful processing and discrete graphics options. Preloaded with Windows 10 Home, you'll have the personal assistance of Cortana, designed to help open apps and answer your questions—whether typed or spoken. From the new streamlined design to a cleaner desktop interface, you'll enjoy the simplicity that Lenovo IdeaPad 320 offers. The biggest challenge you'll face is choosing your perfect color.

## WHY YOU SHOULD BUY THE LENOVO IDEAPAD 320



### Style built to last

The IdeaPad 320 features a sleek chassis with angled edges, and is available in six sophisticated tone-on-tone color options: Platinum Grey, Onyx Black, Blizzard White, Denim Blue, Plum Purple and Coral Red. Better yet, the IdeaPad 320 is designed to keep up with you. We treated it with a special protective finish to guard against wear and tear, and added rubber detailing on the bottom cover to maximize ventilation and extend product life.



### Powerful performance

Top-of-the-line 7<sup>th</sup> Generation Intel® Core™ i7 processing, plus up to 16 GB DDR4 memory, guarantee lightning-fast responsiveness. Run multiple programs simultaneously, and transition seamlessly between web tabs—you'll be able to multi-task with ease.



Lenovo™



### Smooth graphics

The IdeaPad 320 offers a range of graphics options, including a powerful NVIDIA® GeForce® 940MX graphics card. Discrete graphics cards rely on their own processing power, so you'll experience smoother graphics, less screen tearing and better gaming performance without compromising overall speed and responsiveness. Whether you're playing a game, creating, or editing content, you'll enjoy crisp visuals.



### Brilliant FHD resolution

The IdeaPad 320 offers up to Full High-Definition resolution in three screen sizes – 14", 15" and 17". Featuring anti-glare technology, you'll enjoy true visual clarity when you watch movies, browse the web and more.



[WWW.LENOVO.COM](http://WWW.LENOVO.COM)



# ideapad 320

## SPECIFICATIONS

Lenovo IdeaPad 320-14IKB\*, Lenovo IdeaPad 320-15IKB\*, Lenovo IdeaPad 320-17IKB\*

### PERFORMANCE

#### Processor

7<sup>th</sup> Generation Intel® Core™ i7 Processor

#### Operating System

Windows 10 Home

#### Graphics

Intel® Integrated Graphics  
NVIDIA® GeForce® 920MX  
NVIDIA® GeForce® 940MX  
AMD Radeon 530

#### Camera & Microphone

0.3M with Single Microphone  
HD with Single Microphone

#### Memory

4 GB DDR4 On-board,  
16 GB Maximum via One Memory Slot

#### Storage

##### 320-14IKB

Up to 512 GB SATA SSD; or  
Up to 2 TB SATA HDD; or  
Up to 256 GB SATA SSD + 1 TB SATA HDD

##### 320-15IKB, 320-17IKB

Up to 512 GB SATA SSD; or  
Up to 2 TB SATA HDD; or  
128 GB PCIe SSD +  
1 TB SATA HDD + ODD; or  
16 GB Intel® Optane™ SSD +  
1 TB SATA HDD + ODD; or  
Up to 256 GB SATA SSD + 1 TB SATA HDD

#### Audio

2 x 1.5W Speakers with Dolby Audio™

#### Battery<sup>1</sup>

Up to 6 Hours with 35Wh premium battery

### DESIGN

#### Display

##### 320-14IKB

14" HD (1366 x 768) Anti-Glare TN  
14" FHD (1920 x 1080) Anti-Glare

##### 320-15IKB

15.6" HD (1366 x 768) Anti-Glare TN  
15.6" FHD (1920 x 1080) Anti-Glare TN

##### 320-17IKB

17.3" HD+ (1600 x 900) Anti-Glare  
17.3" HD+ (1600 x 900) Glare  
17.3" FHD (1920 x 1080) IPS Anti-Glare

#### Dimensions (W x D x H)

##### 320-14IKB

(mm) : 338.3 x 249.9 x 22.7  
(inches) : 13.3" x 9.8" x 0.89"

##### 320-15IKB, 320 Touch-15IKB

(mm) : 378 x 260 x 22.9  
(inches) : 14.9" x 10.2" x 0.9"

##### 320-17IKB

(mm) : 418 x 292.6 x 24.9  
(inches) : 16.4" x 11.5" x 0.98"

#### Weight

**320-14IKB** : Starting at 4.6 lbs (2.1 kg)  
**320-15IKB** : Starting at 4.8 lbs (2.2 kg)  
**320 Touch-15IKB**: Starting at 4.8 lbs (2.2 kg)  
**320-17IKB** : Starting at 6.17 lbs (2.8 kg)

#### Additional Features

Fingerprint Reader<sup>2</sup>

#### Tone-on-Tone Color Options

##### 320-14IKB

Platinum Grey; Onyx Black;  
Blizzard White; Denim Blue

##### 320-15IKB

Platinum Grey; Onyx Black; Blizzard White;  
Denim Blue; Plum Purple; Coral Red

##### 320-17IKB

Platinum Grey; Onyx Black

### CONNECTIVITY

#### WLAN

1 x 1 WiFi 802.11 ac

#### Bluetooth®

Bluetooth® 4.1

#### I/O (Input/Output) Ports

1 x USB Type-C™  
2 x USB 3.0  
4-in-1 Card Reader  
HDMI™  
RJ45  
Audio Jack

### PRELOADED SOFTWARE

- Lenovo App Explorer
- Lenovo Companion 3.0
- Lenovo ID
- Lenovo Settings
- McAfee LiveSafe™ (30-day trial)
- Microsoft Office 365 (30-day trial)



Lenovo™

<sup>1</sup> All battery life claims are approximate and based on test results using the MobileMark® 2014 ver 1.5 battery life benchmark test. Actual results will vary, and depend on numerous factors including product configuration and usage, software, operating conditions, wireless functionality, power management settings, screen brightness and other factors. The maximum capacity of the battery will naturally decrease with time and usage. See <https://bapccom.com/products/mobilemark-2014/> for additional details.

<sup>2</sup> Optional, enabled on 320-15IKB, 320 Touch-15IKB, and 320-17IKB. Available only on Platinum Grey and Onyx Black

<sup>3</sup> Enabled on 320 Touch-15IKB, US only.

## LENOVO SERVICES

#### Warranty Extensions<sup>1</sup>

This fixed-term, fixed-cost service helps accurately budget for PC expenses and protect your investment.

#### Warranty Upgrade to Onsite Service Repair<sup>2</sup>

Maximizes PC uptime and productivity by providing Convenient, fast repair service at your place.

#### Accidental Damage Protection<sup>1,2</sup>

Coverage for non-warranted damage incurred under normal operating

conditions, such as spills, drops or damage to the integrated screen.

#### Lenovo Services Premium Support<sup>3</sup>

One-stop solution for non-warranty challenges with network, security and software setup, performance tune-up and more.

<sup>1</sup> Up to 3 years total duration

<sup>2</sup> May not be available in all countries

<sup>3</sup> Available in Austria, Germany, Ireland, Switzerland and UK

\* Example of Lenovo IdeaPad catalogue naming convention



#### Intel® platform codes

Haswell: **IHW**, Broadwell: **IBD**, BroadWell U: **IBU**, Skylake: **ISK**, SkyLake U: **ISU**, KabyLake: **IKB**, Cannonlake: **ICN**, Baytrail: **IBY**, Braswell: **IBR**, Cherrytrail: **ICR**, Apollolake: **IAP**, GeminiLake: **IGM**



WWW.LENOVO.COM

Lenovo reserves the right to alter product offerings and specifications at any time, without notice. Lenovo makes every effort to ensure accuracy of all information but is not liable or responsible for any editorial, photographic or typographic errors. All images are for illustration purposes only. For full Lenovo product, service and warranty specifications visit [www.lenovo.com](http://www.lenovo.com). Lenovo makes no representations or warranties regarding third party products or services. **Trademarks:** The following are trademarks or registered trademarks of Lenovo: Lenovo, the Lenovo logo, ideapad, IdeaCentre, yoga and yoga home, Microsoft, Windows and Vista are registered trademarks of Microsoft Corporation. Ultrabook, Celeron, Celeron Inside, Core Inside, Intel, Intel Logo, Intel Atom, Intel Atom Inside, Intel Core, Intel Inside, Intel Inside Logo, Intel vPro, Itanium Inside, Pentium, Pentium Inside, vPro Inside, Xeon, Xeon Phi, and Xeon Inside are trademarks of Intel Corporation in the U.S. and/or other countries. Other company, product and service names may be trademarks or service marks of others. Visit [www.lenovo.com/lenovo/us/en/safecomp/](http://www.lenovo.com/lenovo/us/en/safecomp/) periodically for the latest information on safe and effective computing. ©2017 Lenovo. All rights reserved.



## OPTIONS & ACCESSORIES



Lenovo 300  
Wireless Compact  
Mouse



Lenovo 500  
Extra Bass  
In-ear Headphones



Lenovo 500 2.0  
Bluetooth® Speaker